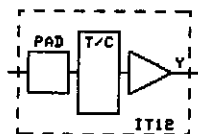


Section 7:

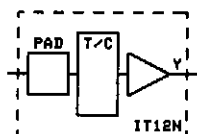
Quicksheets

Q14000 BiCMOS (803)

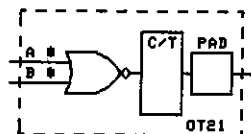
TTL INPUT



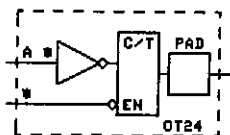
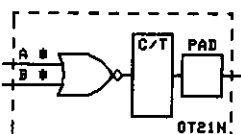
BUFFERED INPUT



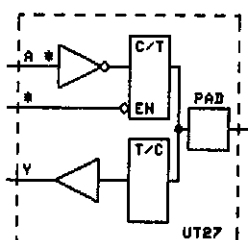
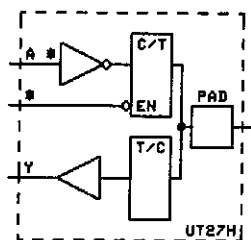
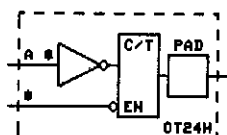
TTL OUTPUT



OR-BUFFER OUTPUT

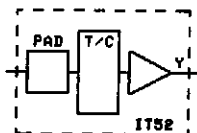


BUFFERED OUTPUT, 3-STATE

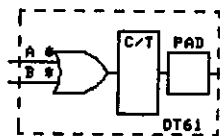


BUFFERED I/O BIDIRECTIONAL

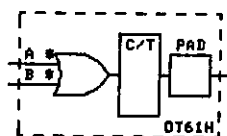
TTL MIX INPUT



TTL MIX OUTPUT

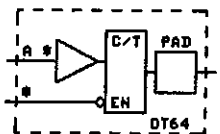


DT61

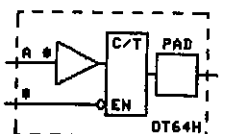


DT61H

NOT IN (001) RELEASE

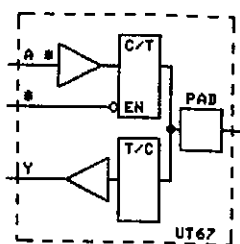


DT64



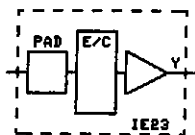
DT64H

NOT IN (001) RELEASE

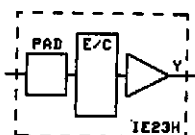


UT67

ECL INPUT

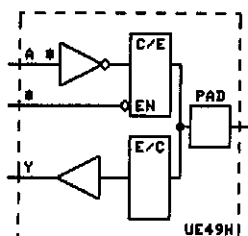
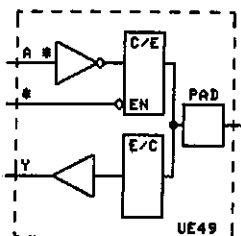
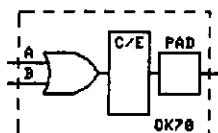
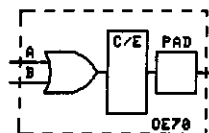


IE22

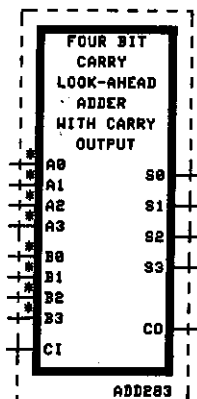


IE23H

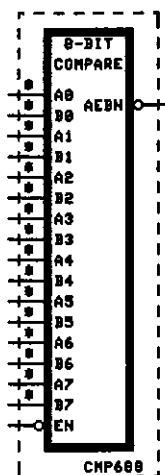
ECL OUTPUT



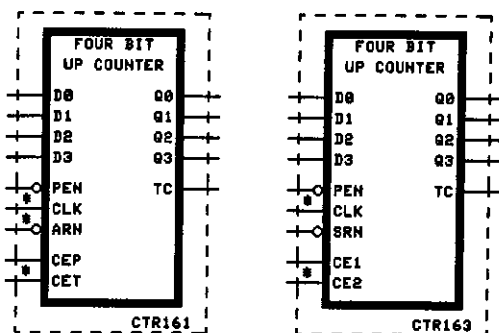
ADDER



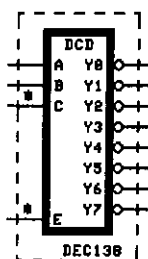
COMPARATOR



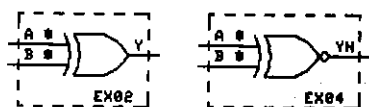
COUNTERS



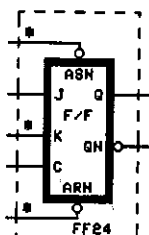
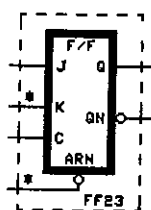
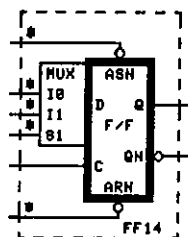
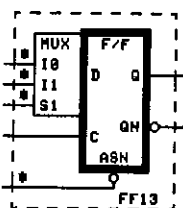
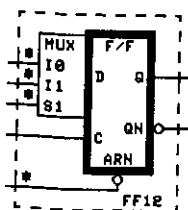
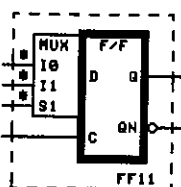
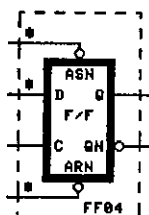
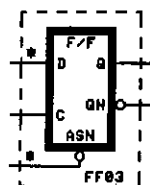
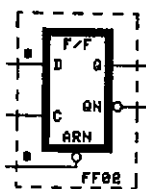
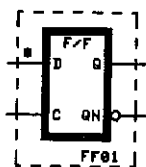
DECODER



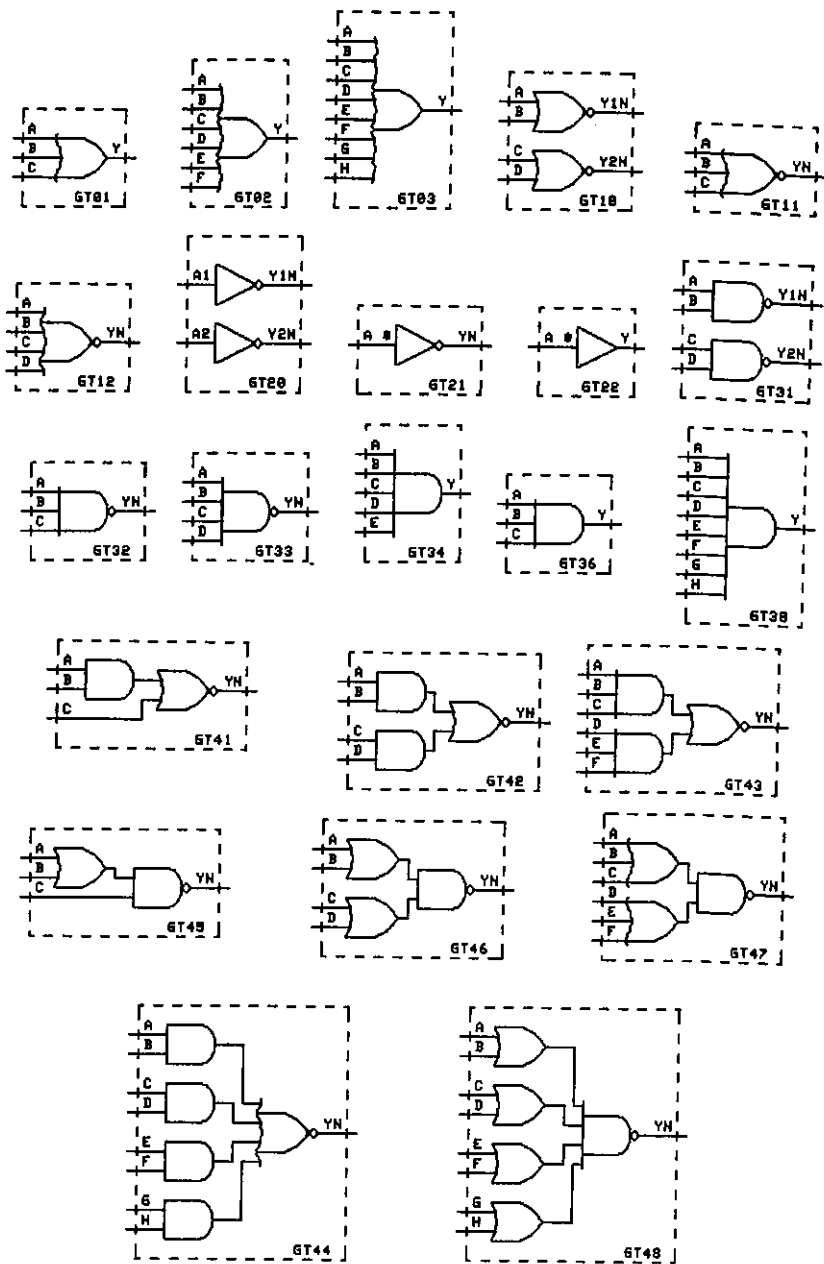
EXOR/EXNOR



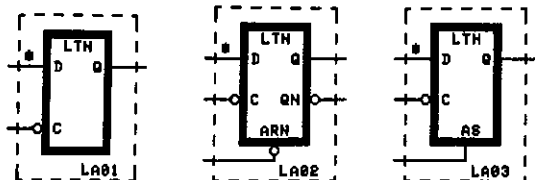
FLIP/FLOPS



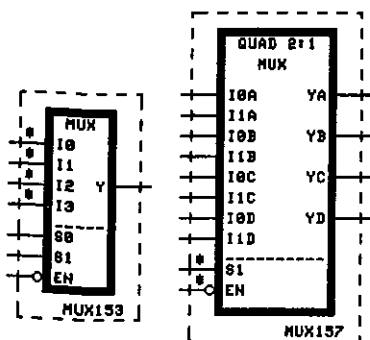
GATES



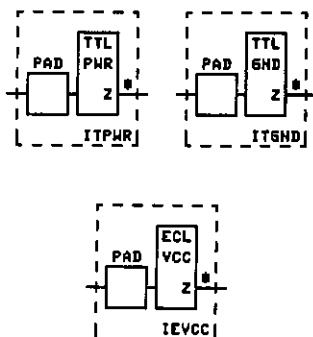
LATCHES



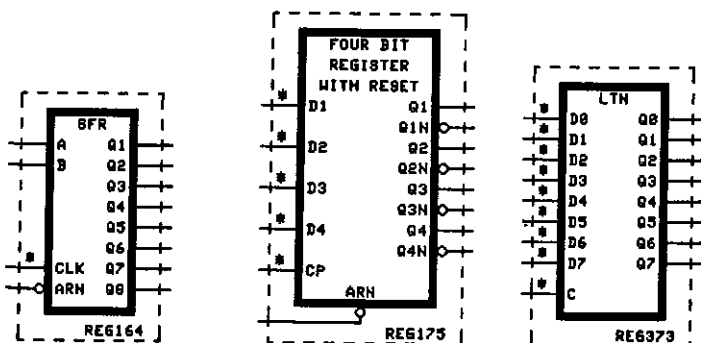
MULTIPLEXORS



MISCELLANEOUS



REGISTERS



REV: 803

TTLVCC
TTL VCC (IO) +5V
PADS 25, 26, 27, 32, 53, 54, 79, 80,
160, 187, 216

TTLGND
TTL GND (IO) 0V
PADS 26, 27, 33, 34, 80, 81,
106, 107, 134, 135, 161,
162, 180, 189, 214, 215

ECLVCC
ECL VCC (CORE) & VDD (CORE) +5V
PADS 14, 15, 37, 38, 66, 67, 91,
92, 122, 123, 145, 146,
174, 175, 199, 200

ECLVEE
ECL VEE (CORE) & VSS (CORE) 0V
PADS 12, 13, 39, 40, 68, 69, 93,
94, 120, 121, 147, 148, 176,
177, 201, 202

PRODUCT_NAME
DEVICE_NUMBER
PRODUCT_GRADE

09100BTL

REV: 803

ECLIOVCC
ECL VCC (IO) 0V
PADS 25, 26, 27, 32, 53, 54, 79, 80,
81, 106, 107, 108, 133, 134,
135, 160, 161, 162, 187, 188,
189, 214, 215, 216

ECLVCC
ECL VCC (CORE) & VDD (CORE) 0V
PADS 14, 15, 37, 38, 66, 67, 91, 92,
122, 123, 145, 146, 174,
175, 199, 200

ECLVEE
ECL VEE (CORE) & VSS (CORE) -5.2V
PADS 12, 13, 39, 40, 68, 69, 93,
94, 120, 121, 147, 148, 176,
177, 201, 202

PRODUCT_NAME
DEVICE_NUMBER
PRODUCT_GRADE
POWER_SUPPLY

09100ECL10K

REV: 803

ECLIOVCC
ECL VCC (IO) 0V
PADS 25, 26, 27, 32, 53, 54, 79, 80,
81, 106, 107, 108, 133, 134,
135, 160, 161, 162, 187, 188,
189, 214, 215, 216

ECLVCC
ECL VCC (CORE) & VDD (CORE) 0V
PADS 14, 15, 37, 38, 66, 67, 91, 92,
122, 123, 145, 146, 174,
175, 199, 200

ECLVEE
ECL VEE (CORE) & VSS (CORE) -4.5V
PADS 12, 13, 39, 40, 68, 69, 93,
94, 120, 121, 147, 148, 176,
177, 201, 202

PRODUCT_NAME
DEVICE_NUMBER
PRODUCT_GRADE
POWER_SUPPLY

09100ECL100K

REV: 803

TTLVCC
TTL VCC (IO) +5V
PADS 25, 52, 79, 108, 133,
160, 187, 216

TTLGND
TTL GND (IO) & ECL VCC (IO) 0V
PADS 26, 27, 53, 54, 80, 81,
106, 107, 134, 135, 161,
162, 188, 189, 214, 215

ECLVCC
ECL VCC (CORE) & VDD (CORE) 0V
PADS 14, 15, 37, 38, 66, 67, 91,
92, 122, 123, 145, 146,
174, 175, 199, 200

ECLVEE
ECL VEE (CORE) & VSS (CORE) -5.2V
PADS 12, 13, 39, 40, 68, 69, 93,
94, 120, 121, 147, 148, 176,
177, 201, 202

PRODUCT_NAME
DEVICE_NUMBER
PRODUCT_GRADE
POWER_SUPPLY

Q91008NIX10K

REV: 803

TTLVCC
TTL VCC (IO) & ECL VCC (IO) +5V
PADS 25, 27, 52, 53, 79, 81, 107,
108, 133, 135, 160, 161,
187, 189, 215, 216

TTLGND
TTL GND (IO) 0V
PADS 26, 54, 80, 106, 134, 162,
188, 214

ECLVCC
ECL VCC (CORE) & VDD (CORE) +5V
PADS 14, 15, 37, 38, 66, 67, 91,
92, 122, 123, 145, 146,
174, 175, 199, 200

ECLVEE
ECL VEE (CORE) & VSS (CORE) 0V
PADS 12, 13, 39, 40, 68, 69, 93,
94, 120, 121, 147, 148, 176,
177, 201, 202

PRODUCT_NAME
DEVICE_NUMBER
PRODUCT_GRADE

Q91008BTL10K

REV: 803

TTLVCC
TTL VCC (IO) +5V
PADS 25, 52, 79, 108, 133
160, 187, 216

TTLGND
TTL GND (IO) & ECL VCC (IO) 0V
PADS 26, 27, 53, 54, 80, 81,
106, 107, 134, 135, 161,
162, 188, 189, 214, 215

ECLVCC
ECL VCC (CORE) & VDD (CORE) 0V
PADS 14, 15, 37, 38, 66, 67, 91,
92, 122, 123, 145, 146,
174, 175, 199, 200

ECLVEE
ECL VEE (CORE) & VSS (CORE) -4.5V
PADS 12, 13, 39, 40, 68, 69, 93,
94, 120, 121, 147, 148, 176,
177, 201, 202

PRODUCT_NAME
DEVICE_NUMBER
PRODUCT_GRADE
POWER_SUPPLY

Q91008NIX100K

REV: 803

TTLVCC
TTL VCC (IO) & ECL VCC (IO) +5V
PADS 25, 27, 52, 53, 79, 81, 107,
108, 133, 135, 160, 161,
187, 189, 215, 216

TTLGND
TTL GND (IO) 0V
PADS 26, 54, 80, 106, 134, 162,
188, 214

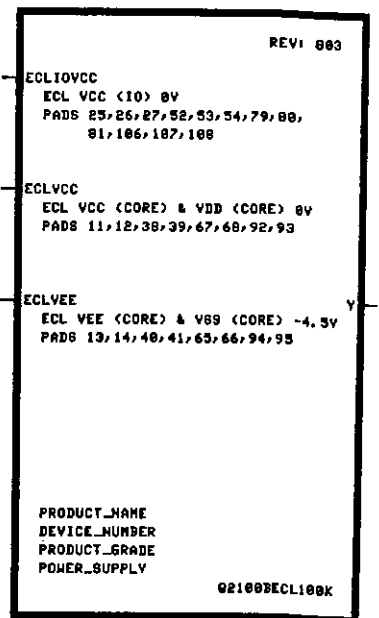
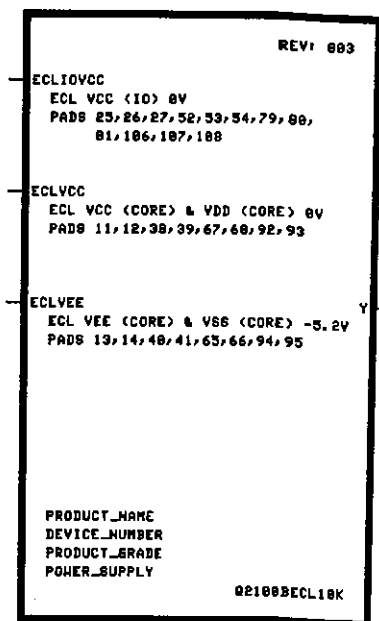
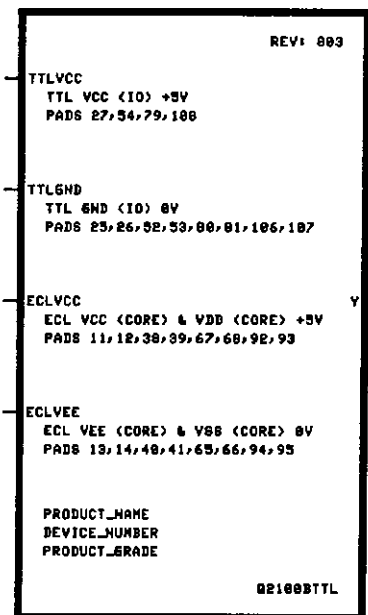
ECLVCC
ECL VCC (CORE) & VDD (CORE) +5V
PADS 14, 15, 37, 38, 66, 67, 91,
92, 122, 123, 145, 146,
174, 175, 199, 200

ECLVEE
ECL VEE (CORE) & VSS (CORE) 0V
PADS 12, 13, 39, 40, 68, 69, 93,
94, 120, 121, 147, 148, 176,
177, 201, 202

PRODUCT_NAME
DEVICE_NUMBER
PRODUCT_GRADE

Q91008BTL100K

CHIP MACROS



REV: 883

TTLVCC
TTL VCC (IO) +5V
PADS 27,54,79,108

TTLGND
TTL GND (IO) & ECL VCC (IO) 0V
PADS 25,26,52,53,88,81,106,107

ECLVCC
ECL VCC (CORE) & VDD (CORE) 0V
PADS 11,12,38,39,67,68,92,93

ECLVEE
ECL VEE (CORE) & V88 (CORE) -5.2V
PADS 13,14,48,41,65,66,94,95

PRODUCT_NAME
DEVICE_NUMBER
PRODUCT_GRADE
POWER_SUPPLY

Q2100BHX100K

REV: 883

TTLVCC
TTL VCC (IO) & ECL VCC (IO) +5V
PADS 26,27,53,54,79,88,107,108

TTLGND
TTL GND (IO) 0V
PADS 25,52,81,106

ECLVCC
ECL VCC (CORE) & VDD (CORE) +5V
PADS 11,12,38,39,67,68,92,93

ECLVEE
ECL VEE (CORE) & V88 (CORE) 0V
PADS 13,14,48,41,65,66,94,95

PRODUCT_NAME
DEVICE_NUMBER
PRODUCT_GRADE

Q2100BTTL100K

REV: 883

TTLVCC
TTL VCC (IO) +5V
PADS 27,54,79,108

TTLGND
TTL GND (IO) & ECL VCC (IO) 0V
PADS 25,26,52,53,88,81,106,107

ECLVCC
ECL VCC (CORE) & VDD (CORE) 0V
PADS 11,12,38,39,67,68,92,93

ECLVEE
ECL VEE (CORE) & V88 (CORE) -4.5V
PADS 13,14,48,41,65,66,94,95

PRODUCT_NAME
DEVICE_NUMBER
PRODUCT_GRADE
POWER_SUPPLY

Q2100BHX100K

REV: 883

TTLVCC
TTL VCC (IO) & ECL VCC (IO) +5V
PADS 26,27,53,54,79,88,107,108

TTLGND
TTL GND (IO) 0V
PADS 25,52,81,106

ECLVCC
ECL VCC (CORE) & VDD (CORE) +5V
PADS 11,12,38,39,67,68,92,93

ECLVEE
ECL VEE (CORE) & V88 (CORE) 0V
PADS 13,14,48,41,65,66,94,95

PRODUCT_NAME
DEVICE_NUMBER
PRODUCT_GRADE

Q2100BTTL100K

()

()

()